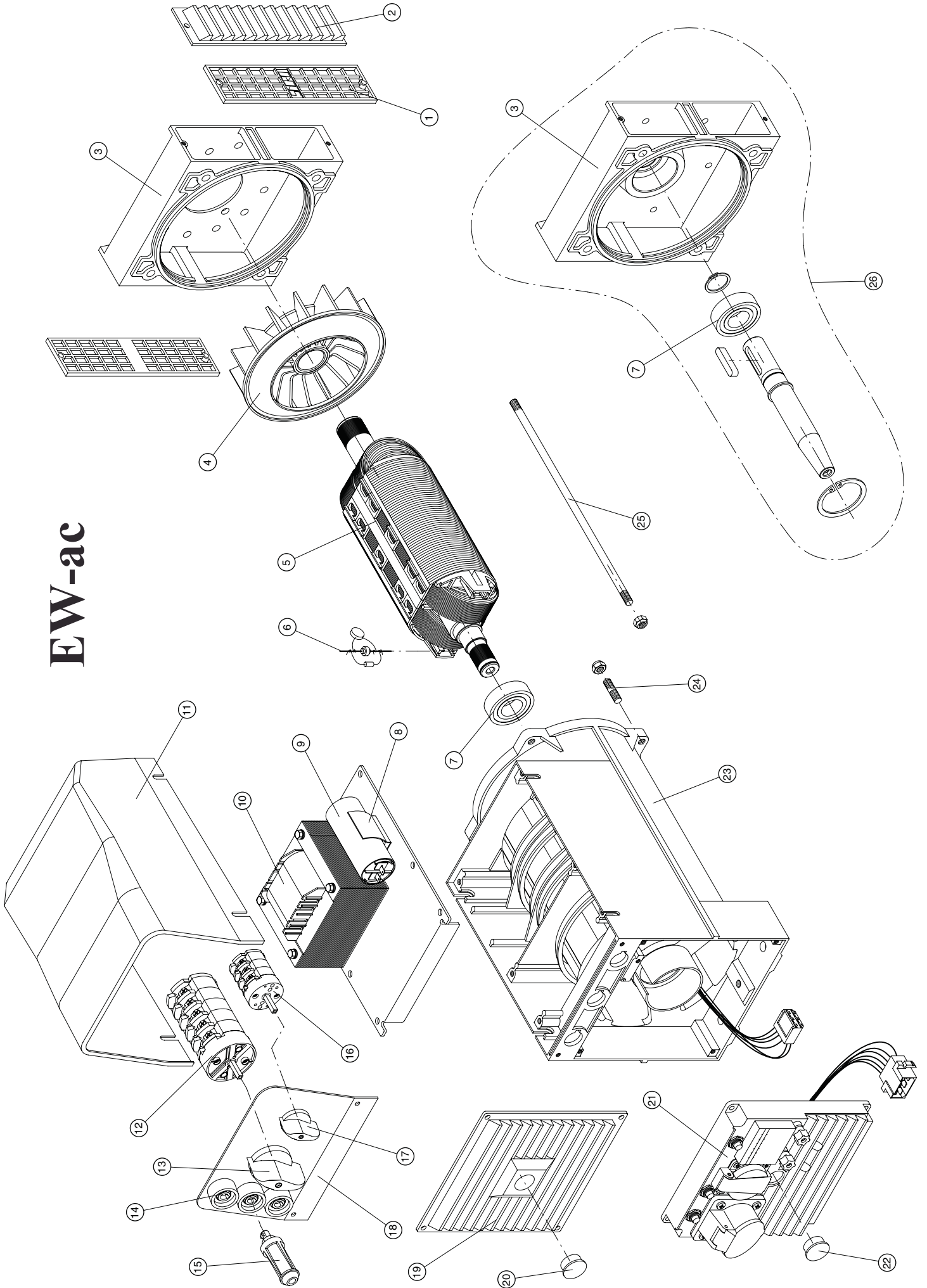


EW-ac





PARTI DI RICAMBIO SPARE PARTS LIST PIECES DETACHEES

SERIE EW-AC

SALDATRICI A CORRENTE ALTERNATA
ALTERNATING CURRENT WELDERS
APPAREILS DE SOUDAGE EN COURANT ALTERNATIF

N.RIF	CODICE SINCRO	DESCRIZIONE	DESCRIPTION	DESCRIPTION
1	266062001	Griglia anteriore IP21	Front grid IP21	Grille de protection antérieure IP21
2	266042001	Griglia anteriore IP23	Front grid IP23	Grille de protection antérieure IP23
3(*)	4061011031	Scudo anteriore "E" IMB35 J609B	Front shield "E" IMB35 J609B	Flasque antérieure "E" IMB35 J609B
	4061011291	Scudo ant. "E" IMB35 c.23-c.30 (130-140AC)	Front shield "E" IMB35 c.23 (130-140AC)	Flasque ant. "E" IMB35 c.23-c.30 (130-140AC)
	4061011123	Scudo anteriore "E" IMB35 c.23-c.30	Front shield "E" IMB35 c.23-c.30	Flasque antérieure "E" IMB35 c.23-c.30
	4061011011	Scudo anteriore "E" IMB34 (B3/B14)	Front shield "E" IMB34 (B3/B14)	Flasque antérieure "E" IMB34 (B3/B14)
4(*)	266083001	Ventola (con foro d.30)	Fan (with hole d.30)	Ventilateur (avec trou d.30)
	266083002	Ventola (con foro d.35)	Fan (with hole d.35)	Ventilateur (avec trou d.35)
5(*)	R511237095.	Rotore EW 130-140 AC (Accopp. ?) (1)	Rotor EW 130-140 AC (Coupling ?) (1)	Rotor EW 130-140 AC (Accouplem. ?) (1)
	R511237125.	Rotore EW 180-190 AC (Accopp. ?) (1)	Rotor EW 180-190 AC (Coupling ?) (1)	Rotor EW 180-190 AC (Accouplem. ?) (1)
	R521237180.	Rotore EW 200-220 AC (Accopp. ?) (1)	Rotor EW 200-220 AC (Coupling ?) (1)	Rotor EW 200-220 AC (Accouplem. ?) (1)
6	79060	Diodo + Varistore + Condensatore EMC	Diode + Varistor + EMC Capacitor	Diode + Varistor + Condensateur EMC
7	1750016205	Cuscinetto 6205 2RS C3	Bearing - 6205 2RS C3	Roulement - 6205 2RS C3
8	1790052	Molla portacondensatore	Capacitor block spring	Ressort fixation condensateur
9(*)	3001000315	Condensat. 31.5µF 450V	Capacitor 31.5µF 450V	Condensat. 31.5µF 450V
	300100045	Condensat. 45µF 450V	Capacitor 45µF 450V	Condensat. 45µF 450V
10(*)	308072015A	Impedenza EW 130-140 AC	EW 130-140 AC weld. impedance	Reactance EW 130-140 AC
	308072014A	Impedenza EW 180+220 AC	EW 180+220 AC weld. impedance	Reactance EW 180+220 AC
11	266024005	Coperchio ET-EW-EKM nero	ET-EW-EKM black top cover	Couvercle supérieur ET-EW-EKM noir
12	3035020401	Commutatore 2 posiz. (GEN/WELD)	2 posit. commutator (GEN/WELD)	Commutateur 2 posit. (GEN/WELD)
13	266000005	Manopola commutatore (2 pos.) d.48mm	Commutator knob (2 pos.) d.48mm	Bouton de le commutat. (2 pos.) d.48mm
14	305900200	Morsetto femmina 200A saldatura	Female 200A welding terminal	Borne de soudage (200A femelle)
15	305901200	Morsetto maschio 200A saldatura	Male 200A welding terminal	Borne de soudage (200A mâle)
16(*)	303506016	Commutatore 6 posiz. (EW 130+190 AC)	6 posit. commutator (EW 130+190 AC)	Commutateur 6 posit. (EW 130+190 AC)
	303507016	Commutatore 7 posiz. (EW 200-220 AC)	7 posit. commutator (EW 200-220 AC)	Commutateur 7 posit. (EW 200-220 AC)
17	266000004	Manopola commutatore (6-7 pos.) d.34mm	Commutator knob (6-7 pos.) d.34mm	Bouton du commutat. (6-7 pos.) d.34mm
18(*)	215009041	Mostrina EW 130 AC	EW 130 AC panel	Plaque EW 130 AC
	215009054	Mostrina EW 140 AC	EW 140 AC panel	Plaque EW 140 AC
	215009042	Mostrina EW 180 AC	EW 180 AC panel	Plaque EW 180 AC
	215009055	Mostrina EW 190 AC	EW 190 AC panel	Plaque EW 190 AC
	215009043	Mostrina EW 200 AC	EW 200 AC panel	Plaque EW 200 AC
	215009056	Mostrina EW 220 AC	EW 220 AC panel	Plaque EW 220 AC
19	266022004	Griglia posteriore IP23 GS100T	IP23 end grid (GS100T)	Couvercle postér. aspiration IP23
20	266064008	Tappo KS	Tap (KS)	Bouchon (KS)
21(*)	266061004	Cuffia EK cieca	Blind EK end cover	Couvercle post. aspiration EK sans trous
	7022..	Quadretto EK monofase (vedi listino)	EK single-phase panel (see price list)	Tableau monophasé EK (voir liste de prix)
22	266064007	Tappo EK	Tap (EK)	Bouchon (EK)
23(*)	651276095A1	Carcassa M + Statore EW 130 AC 50Hz	Housing M + Stator EW 130 AC 50Hz	Carcasse M + Stator EW 130 AC 50Hz
	651276095E1	Carcassa M + Statore EW 140 AC 60Hz	Housing M + Stator EW 140 AC 60Hz	Carcasse M + Stator EW 140 AC 60Hz
	651276125A1	Carcassa M + Statore EW 180 AC 50Hz	Housing M + Stator EW 180 AC 50Hz	Carcasse M + Stator EW 180 AC 50Hz
	651276125E1	Carcassa M + Statore EW 190 AC 60Hz	Housing M + Stator EW 190 AC 60Hz	Carcasse M + Stator EW 190 AC 60Hz
	651276180A1	Carcassa L + Statore EW 200 AC 50Hz	Housing L + Stator EW 200 AC 50Hz	Carcasse L + Stator EW 200 AC 50Hz
	651276180E1	Carcassa L + Statore EW 220 AC 60Hz	Housing L + Stator EW 220 AC 60Hz	Carcasse L + Stator EW 220 AC 60Hz
24	176006030	Tirante M8x30	Stay bolt - M8x30	Tige M8x30
25(*)	17600..	Tirante albero (dimensioni-accoppiam.?)	Shaft stay bolt (dimensions-coupling ?)	Tige centrale (dimensions-accouplem. ?)
26	300005	KIT: da IMB35 J609B a IMB34 (B3/B14)	KIT: from IMB35 J609B to IMB34 (B3/B14)	KIT: de IMB35 J609B à IMB34 (B3/B14)
	179021065	Giunto elastico 6 1/2 per cono 35	Disk joint 6 1/2 for cone 35	Joint à disque 6 1/2 pour cone 35
	1790210651	Giunto elastico 6 1/2 per cono 30	Disk joint 6 1/2 for cone 30	Joint à disque 6 1/2 pour cone 30
	179021075	Giunto elastico 7 1/2 per cono 35	Disk joint 7 1/2 for cone 35	Joint à disque 7 1/2 pour cone 35
	1790210751	Giunto elastico 7 1/2 per cono 30	Disk joint 7 1/2 for cone 30	Joint à disque 7 1/2 pour cone 30
--	406101119	Flangia SAE5 per scudo B9	Flange SAE5 for shield B9	Adaptateur SAE5 pour flasque B9
	4061011191	Flangia SAE5 per scudo J609b	Flange SAE5 for shield J609b	Adaptateur SAE5 pour flasque J609b

(1) Comprende i particolari 4 + 6 + 7

(1) Items 4 + 6 + 7 are included

(1) Comprend les pièces 4 + 6 + 7

(* Includere nella richiesta di pezzi di ricambio la descrizione dell'oggetto, il codice, il numero di matricola e le caratteristiche della macchina (rilevabili dalla targhetta).

(* When ordering spare parts, please indicate the alternator code-number and machine serial number and characteristics (they are available on the nameplate)

(* Nous vous prions d'indiquer, dans vos commandes de pièces de rechange, la description de la pièce, le numéro de code et de série et les caractéristiques de la machine